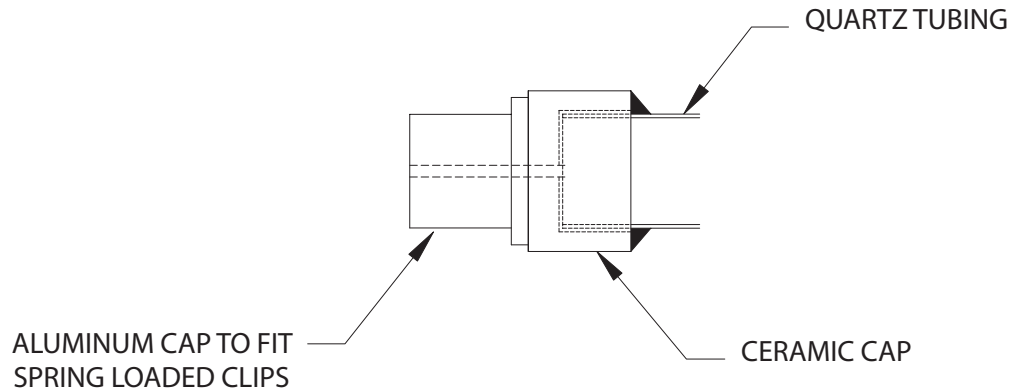


Tubular Heater Products: Mounting Methods - Quartz Radiant Infrared Heaters

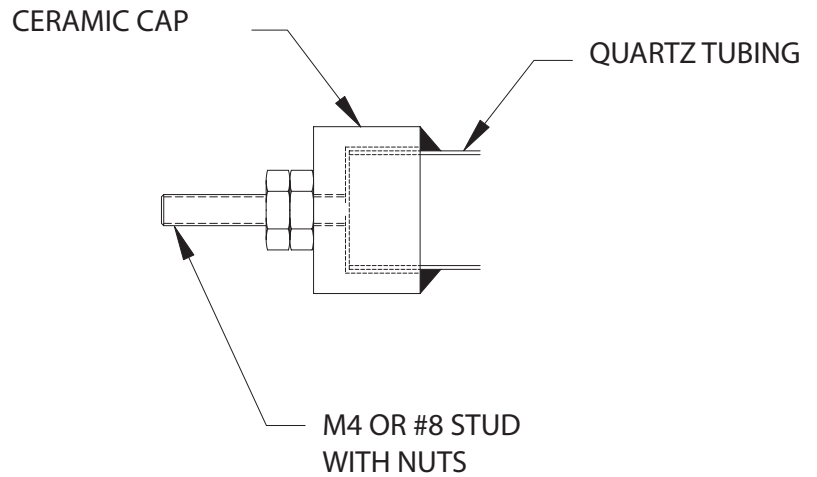
Mounting Style 1

Aluminum Cap:
.540 Dia by 5/8" long Aluminum
cap is used on each end



Mounting Style 2

Ceramic Cap:
with a #8 or M4 threaded termi-
nal for electrical connection.



Maximum Recommended Wattages

- 3/8" Heaters can run up to 45 watts/linear in.
- 1/2" Heaters can run up to 60 watts/linear in.
- 5/8" Heaters can run up to 90 watts/linear in.

